

OFFICIAL ZONING MAP EXHIBITS

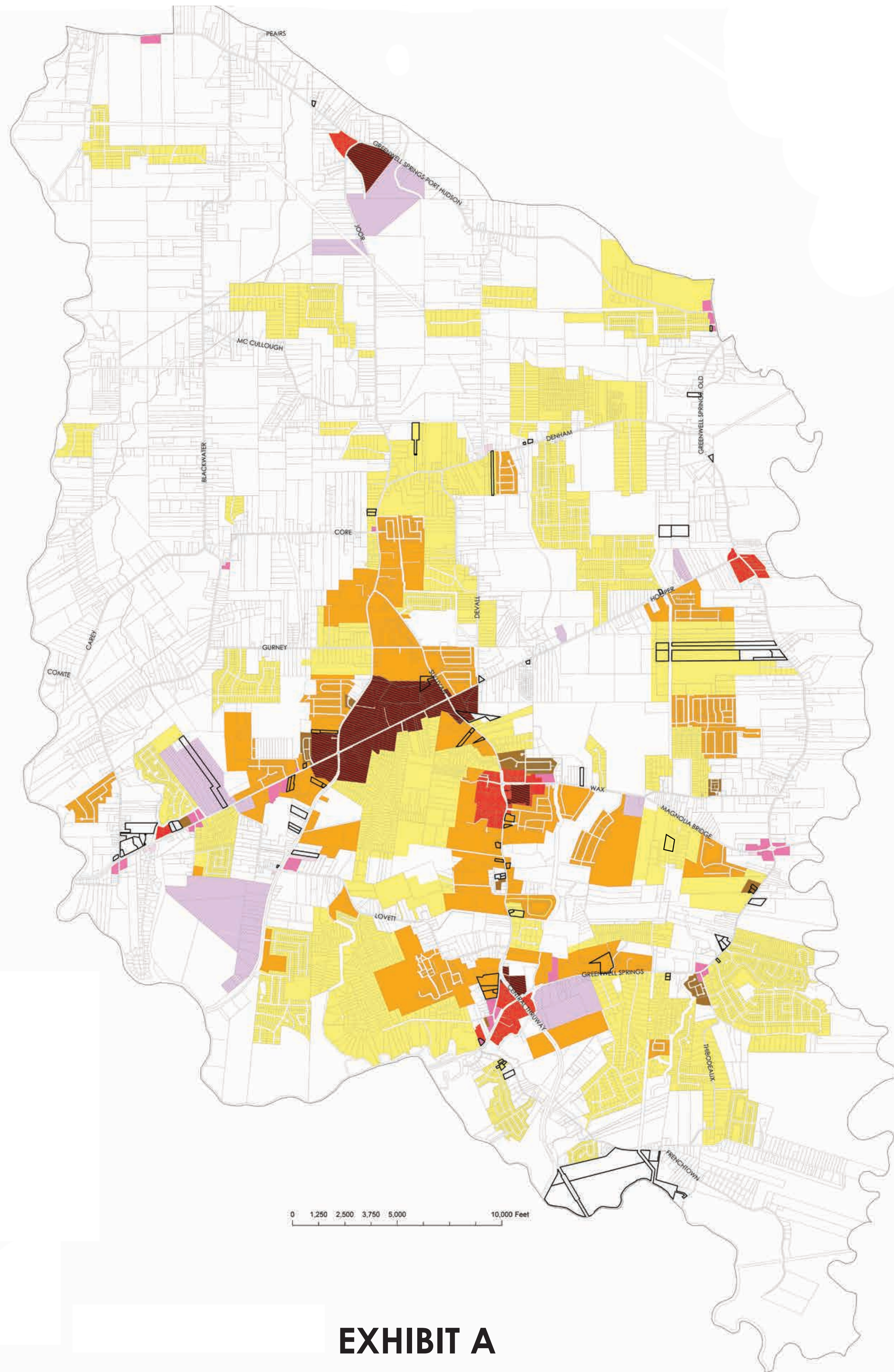


EXHIBIT A

EXHIBIT A LEGEND
ZONING DISTRICTS (Effective July 1, 2014)

- B1 - Neighborhood Business One
- B2 - Neighborhood Business Two
- B3 - General Commercial/Business Three
- B4 - General Commercial/Business Four
- B5- Large Scale Commercial/ Business Five
- ORD- Office, Research and Development
- R1- Single Family Residential One
- R2- Single Family Residential Two
- R3- Single Family Attached/Multi-Family Residential Three
- RA- Rural/Agricultural
- RETAINED ZONING DISTRICT (SEE EXHIBIT B)

EXHIBIT B LEGEND
RETAINED ZONING DISTRICTS

- NO-Neighborhood Office
- GOL-General Office Low Rise
- C1-Light Commercial
- C2-Heavy Commercial
- LC1-Light Commercial One
- LC2-Light Commercial Two
- LC3-Light Commercial Three
- HC1-Heavy Commercial One
- M1-Light Industrial
- M2-Heavy Industrial



EXHIBIT B

Disclaimer
 This Official Zoning Map was produced by the City of Central using the East Baton Rouge Parish Planning Commission's GIS files and various other sources of information to depict corporate boundaries and approximate locations of land uses and zoning districts. This map is not suitable for engineering, legal, or surveying purposes. This map is solely intended informational purposes.
 The City of Central makes no warranties or representations regarding the accuracy, appropriateness, completeness, inclusiveness, reliability, usability, or validity of the information provided and assumes no liability to users.
 The City of Central does not warrant that this map meets the requirements of users or that this map is error free. Users are advised to verify all information before making any decision based upon the information shown on this map.
 In no event shall the City of Central or anyone involved in the creation of this map be liable for any damages whatsoever.
 In the case of conflict between a validly adopted ordinance of the City of Central and this map, the ordinance shall control.
 For inquiries call the City of Central Planning Director (225) 262-5000.
 June 24, 2014
 2014 Copyright.