



- 1

CITY HALL
15,600 SF +/-
2 FLOORS
CONNECTED TO PLAZA
COUNCIL CHAMBERS
MAYOR'S OFFICE
LARGE MULTI-PURPOSE ROOM
CITY SERVICES OFFICES (IBTS)
CITY OF CENTRAL OFFICES
- 2

CLOCK TOWER PLAZA
9,400 SF OUTDOOR GATHERING AND CIRCULATION SPACE
COVERED WALK FROM CITY HALL TO FUTURE SCHOOL BOARD BUILDING
LANDMARK CLOCK TOWER
- 3

PROPOSED SCHOOL BOARD ADMINISTRATIVE OFFICE
12,000 SF +/-
2 FLOORS
ACCESS TO SHARED COUNCIL/SCHOOL BOARD CHAMBERS VIA PLAZA
- 4

PARKING
PARKING FOR CITY HALL AND PROPOSED SCHOOL BOARD JOINT BUILDING
176 SHOWN
34 PARALLEL SPACES SHOWN ALONG PROPOSED ROADS
- 5

PAD SITES
UP TO 5500 SF EACH @ GROUND LEVEL
- 6

ENTRYWAYS OFF HOOPER AND SULLIVAN ROADS
PROPOSED BOULEVARD TO SET UP AN AXIS FOR FUTURE PHASES
ROUNDBOUT FOR CITY FEATURE/MONUMENT
PARALLEL PARKING FOR A MORE URBAN FEEL
- 7

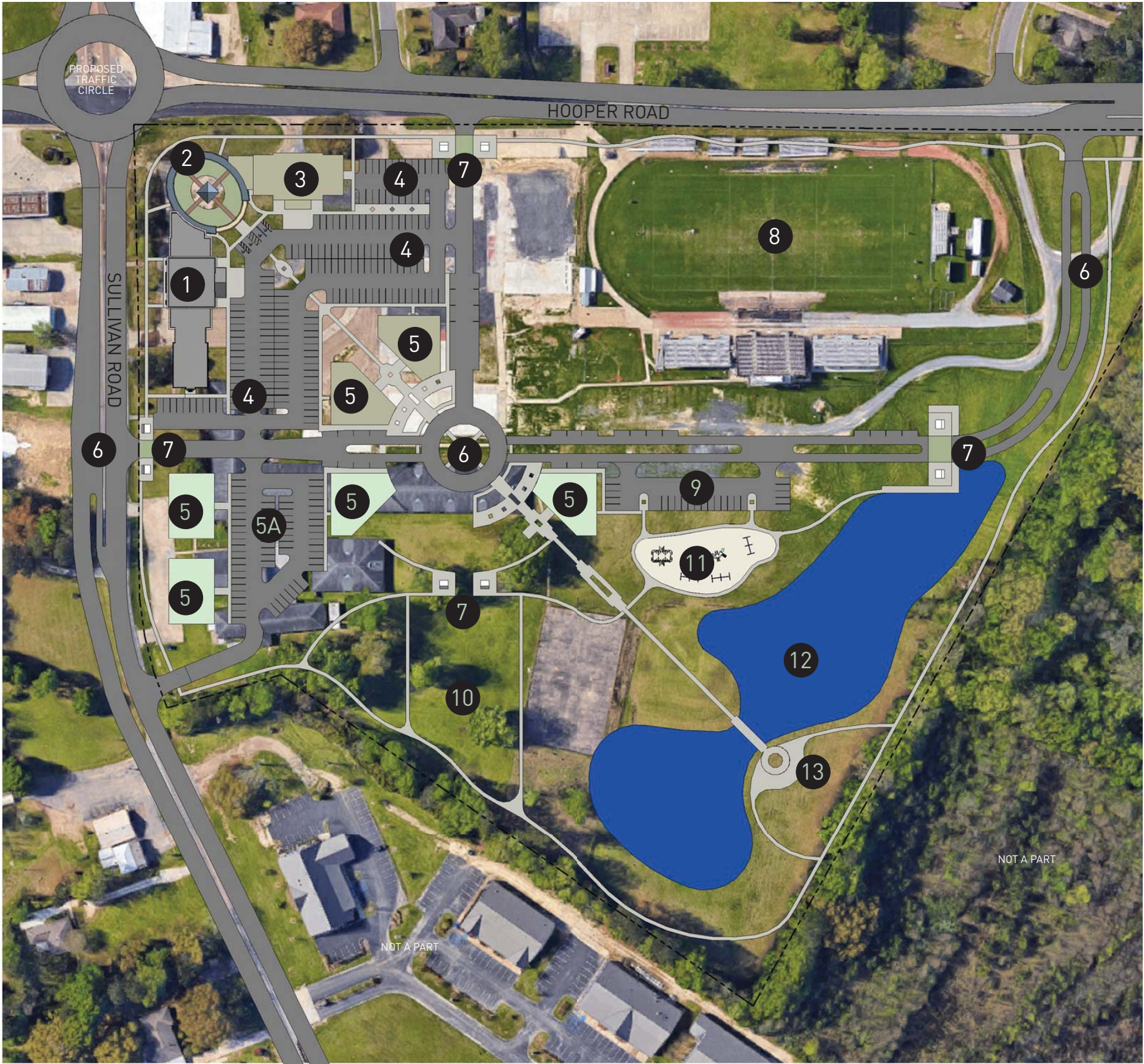
GATEWAY ENTRY FEATURES
PROVIDE AN ENTRY FEATURE TO DRAW THE PUBLIC IN
STRENGTHENS THE AXIS OF THE SITE
- 8

EXISTING STADIUM
TO REMAIN UNTIL FINAL PHASE





- 1 **CITY HALL:**
15,600 SF +/-
2 FLOORS
CONNECTED TO PLAZA
COUNCIL CHAMBERS
MAYOR'S OFFICE
LARGE MULTI-PURPOSE ROOM
CITY SERVICES OFFICES (IBTS)
CITY OF CENTRAL OFFICES
- 2 **CLOCK TOWER PLAZA**
9,400 SF OUTDOOR GATHERING AND CIRCULATION SPACE
COVERED WALK FROM CITY HALL TO FUTURE SCHOOL BOARD BUILDING
LANDMARK CLOCK TOWER
- 3 **PROPOSED SCHOOL BOARD ADMINISTRATIVE OFFICE**
12,000 SF +/-
2 FLOORS
ACCESS TO SHARED COUNCIL/SCHOOL BOARD CHAMBERS VIA PLAZA
- 4 **PARKING**
PARKING FOR CITY HALL AND PROPOSED SCHOOL BOARD JOINT BUILDING
176 SHOWN
34 PARALLEL SPACES SHOWN ALONG PROPOSED ROADS
- 5 **PAD SITES**
UP TO 5500 SF EACH @ GROUND LEVEL
- 6 **ENTRYWAYS OFF HOOPER AND SULLIVAN ROADS**
PROPOSED BOULEVARD TO SET UP AN AXIS FOR FUTURE PHASES
ROUNDBOUT FOR CITY FEATURE/MONUMENT
PARALLEL PARKING FOR A MORE URBAN FEEL
- 7 **GATEWAY ENTRY FEATURES**
PROVIDE AN ENTRY FEATURE TO DRAW THE PUBLIC IN
STRENGTHENS THE AXIS OF THE SITE
- 8 **EXISTING STADIUM**
TO REMAIN UNTIL FINAL PHASE



- 1 **CITY HALL**
15,600 SF +/-
2 FLOORS
CONNECTED TO PLAZA
COUNCIL CHAMBERS
MAYOR'S OFFICE
LARGE MULTI-PURPOSE ROOM
CITY SERVICES OFFICES (IBTS)
CITY OF CENTRAL OFFICES
- 2 **CLOCK TOWER PLAZA**
9,400 SF OUTDOOR GATHERING AND CIRCULATION SPACE
COVERED WALK FROM CITY HALL TO FUTURE SCHOOL BOARD BUILDING
LANDMARK CLOCK TOWER
- 3 **PROPOSED SCHOOL BOARD ADMINISTRATIVE OFFICE**
12,000 SF +/-
2 FLOORS
ACCESS TO SHARED COUNCIL/SCHOOL BOARD CHAMBERS VIA PLAZA
- 4 **PARKING**
PARKING FOR CITY HALL AND PROPOSED SCHOOL BOARD JOINT BUILDING
176 SHOWN
34 PARALLEL SPACES SHOWN ALONG PROPOSED ROADS
- 5 **PAD SITES**
UP TO 5500 SF EACH @ GROUND LEVEL
- 5A **PAD SITES PARKING**
ADDITIONAL PARKING FOR PAD SITES
- 6 **ENTRYWAYS OFF HOOPER AND SULLIVAN ROADS**
PROPOSED BOULEVARD TO SET UP AN AXIS FOR FUTURE PHASES
ROUNDBOUT FOR CITY FEATURE/MONUMENT
PARALLEL PARKING FOR A MORE URBAN FEEL
- 7 **GATEWAY ENTRY FEATURES**
PROVIDE AN ENTRY FEATURE TO DRAW THE PUBLIC IN
STRENGTHENS THE AXIS OF THE SITE
- 8 **EXISTING STADIUM**
TO REMAIN UNTIL FINAL PHASE
- 9 **RECREATIONAL PARKING**
PARKING FOR ACCESS TO RECREATIONAL ACTIVITIES
- 10 **CENTRAL CITY LAWN**
OPEN LAWN FOR OUTDOOR EVENTS HOSTED BY CITY
- 11 **PLAYGROUND**
PUBLIC PLAYGROUND
- 12 **POND**
POND W/ BRIDGE FEATURE
POTENTIAL ADA FISHING OFF PIER @ GATEWAYS
- 13 **FOUNTAIN/ WATER FEATURE**
WATER FEATURE TO PUNCTUATE AXIS



- 1 CITY HALL:
15,600 SF +/-
2 FLOORS
CONNECTED TO PLAZA
COUNCIL CHAMBERS
MAYOR'S OFFICE
LARGE MULTI-PURPOSE ROOM
CITY SERVICES OFFICES (IBTS)
CITY OF CENTRAL OFFICES
- 2 CLOCK TOWER PLAZA
9,400 SF OUTDOOR GATHERING AND CIRCULATION SPACE
COVERED WALK FROM CITY HALL TO FUTURE SCHOOL BOARD BUILDING
LANDMARK CLOCK TOWER
- 3 PROPOSED SCHOOL BOARD ADMINISTRATIVE OFFICE
12,000 SF +/-
2 FLOORS
ACCESS TO SHARED COUNCIL/SCHOOL BOARD CHAMBERS VIA PLAZA
- 4 PARKING
PARKING FOR CITY HALL AND PROPOSED SCHOOL BOARD JOINT BUILDING
176 SHOWN
34 PARALLEL SPACES SHOWN ALONG PROPOSED ROADS
- 5 PAD SITES
UP TO 5500 SF EACH @ GROUND LEVEL
- 5A PAD SITES PARKING
ADDITIONAL PARKING FOR PAD SITES
- 5B PAD SITES
UP TO 7500 SF PAD SITES @ GROUND LEVEL
- 6 ENTRYWAYS OFF HOOPER AND SULLIVAN ROADS
PROPOSED BOULEVARD TO SET UP AN AXIS FOR FUTURE PHASES
ROUNDBOUT FOR CITY FEATURE/MONUMENT
PARALLEL PARKING FOR A MORE URBAN FEEL
- 7 GATEWAY ENTRY FEATURES
PROVIDE AN ENTRY FEATURE TO DRAW THE PUBLIC IN
STRENGTHENS THE AXIS OF THE SITE
- 8 RETAIL PARKING
PARKING TO REPLACE OLD STADIUM FOR RETAIL SPACES
- 9 RECREATIONAL PARKING
PARKING FOR ACCESS TO RECREATIONAL ACTIVITIES
- 10 CENTRAL CITY LAWN
OPEN LAWN FOR OUTDOOR EVENTS HOSTED BY CITY
- 11 PLAYGROUND
PUBLIC PLAYGROUND
- 12 POND
POND W/ BRIDGE FEATURE
POTENTIAL ADA FISHING OFF PIER @ GATEWAYS
- 13 FOUNTAIN/ WATER FEATURE
WATER FEATURE TO PUNCTUATE AXIS
- 14 RETAIL PAD SITES
UP TO 50,000 SF OF RETAIL SPACE
- 15 ADDITIONAL POND
POTENTIAL LOCATION FOR ADDITIONAL POND